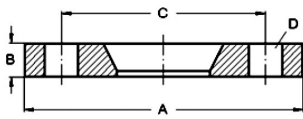
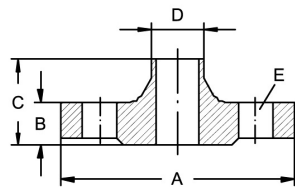
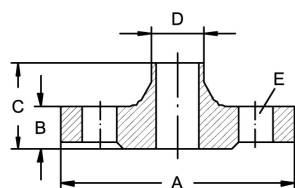


Welding neck flanges EN 1092-1
Art.No
EUR
Art.No
EUR
Flange for Sight glass ND 40


DN	A	B	C	D				AISI316Ti-1.4571
25	115	18	85	4xM12x70				468833 Enquiry
32	140	18	100	4xM16x75				468834 Enquiry
40	150	18	110	4xM16x90				468835 Enquiry
50	165	20	125	4xM16x90				468836 Enquiry
65	185	22	145	8xM16x90				468837 Enquiry
80	200	24	160	8xM16x100				468838 Enquiry
100	235	24	190	8xM20x100				468839 Enquiry
125	270	26	220	8xM24x110				468841 Enquiry

Welding neck flange, DIN 2631, ND 6


DN	A	B	C	D	E	AISI316L-1.4435	AISI316Ti-1.4571
10	75	12	28	17,2x1,8	4xM10x40	467430 Enquiry	464630 Enquiry
15	80	12	30	21,3x2	4xM10x40	467431 Enquiry	464631 Enquiry
20	90	14	32	26,9x2,3	4xM10x50	467432 Enquiry	464632 Enquiry
25	100	14	35	33,7x2,6	4xM10x50	467433 Enquiry	464633 Enquiry
32	120	14	35	42,4x2,6	4xM12x55	467434 Enquiry	464634 Enquiry
40	130	14	38	48,3x2,6	4xM12x55	467435 Enquiry	464635 Enquiry
50	140	14	38	60,3x2,9	4xM12x55	467436 Enquiry	464636 Enquiry
65	160	14	38	76,1x2,9	4xM12x55	467437 Enquiry	464637 Enquiry
80	190	16	42	88,9x3,2	4xM16x65	467438 Enquiry	464638 Enquiry
100	210	16	45	114,3x3,6	4xM16x65	467439 Enquiry	464639 Enquiry
125	240	18	48	139,7x4	8xM16x65	467441 Enquiry	464641 Enquiry
150	265	18	48	168,3x4,5	8xM16x65	467442 Enquiry	464642 Enquiry
200	320	20	55	219,1x5,9	8xM16x75	467444 Enquiry	464644 Enquiry
250	375	22	60	273x6,3	12xM16x75	467446 Enquiry	464646 Enquiry
300	440	22	62	323,9x7,1	12xM20x80	467448 Enquiry	464648 Enquiry

Welding neck flange DIN 2632, ND 10


DN	A	B	C	D	E	AISI316L-1.4435	AISI316Ti-1.4571
200	340	24	62	219,1x5,9	8xM20x80	467544 Enquiry	464844 Enquiry
250	395	26	68	273x6,3	12xM20x80	467546 Enquiry	464846 Enquiry
300	445	26	68	323,9x7,1	12xM20x80	467548 Enquiry	464848 Enquiry
350	505	26	68	355,6x7,1	16xM20x80	467501 Enquiry	464801 Enquiry
400	565	26	72	406,4x7,1	16xM24x90	467502 Enquiry	464802 Enquiry
500	670	28	75	508x7,1	20xM24x90	467503 Enquiry	464803 Enquiry

10 - 150 Use flanges ND 16.